



THE LEADING NAME IN LOCAL FURNACES NOW HAS A NEW GENERATION



COMPACT 2G
4-WAY MULTIPOISE
(KHM-K100 SHOWN)

PARADIGM 2G 96%+ LOWBOY REAR
BREECH (KLC-K100)

ECLIPSE 2G REAR BREECH
(KLR-E100 SHOWN)
FRONT BREECH MODEL AVAILABLE

+ PERFORMANCE



ENERGY STAR® QUALIFIED
AT ALL FIRING RATES

+ COMFORTABLE

A MORE EVEN HEAT AND A QUICKER,
MORE PRECISE RESPONSE TO A CALL
FOR HEAT FROM THE THERMOSTAT

+ ECONOMICAL OPERATION

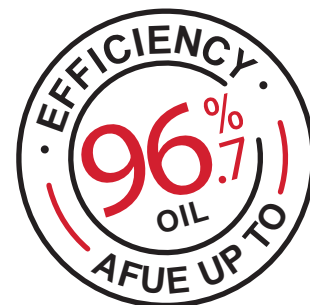
ANNUAL EFFICIENCY RANGING
FROM 86% TO 96.7% (OIL)
HIGH-EFFICIENCY BLOWER MOTORS

+ EASE OF MAINTENANCE

DUE TO ITS NON-REFRACTORY COMBUSTION CHAMBER
AND TUBULAR SECONDARY
HEAT EXCHANGERS

+ VERSATILE

CERTIFIED FOR CONVERSION TO
GAS BURNER (88+ SERIES)



IMPROVED EFFICIENCIES MEAN YOU SAVE EVEN MORE MONEY AND ENERGY ON HOME COMFORT



KLC-K

THE KERR PARADIGM 2G FURNACE IS THE FIRST OIL-FIRED FURNACE BUILT FOR HOMEOWNERS WHO EXPECT UNSURPASSED PERFORMANCE AND ENERGY EFFICIENCY. ITS INNOVATIVE OPERATION WILL HAVE YOU PROFIT FROM A 96%+ HEATING EFFICIENCY ALONG WITH SUPERIOR PERFORMANCE AND COMFORT. THIS PERFORMANCE COULD HELP YOU SAVE UP TO 40% ON YOUR HEATING OIL CONSUMPTION AND COULD REDUCE YOUR GREENHOUSE GAS (GHG) EMISSIONS BY UP TO 3,000 LB./YR! IN ADDITION THE KERR PARADIGM 2G HOLDS THE ENERGY STAR® CERTIFICATION AT ALL FIRING RATES. ITS CONCEPTION COMBINING PERFORMANCE AND DURABILITY WILL BRING YOU THE BEST COMFORT POSSIBLE AND THE EASE OF MAINTENANCE THAT YOU ARE LOOKING FOR.

FEATURES

1 ROBUST AND DURABLE COMBUSTION CHAMBER

- 100% premium stainless steel construction
- European design
- Heats up more quickly
- Helps in maintaining a more even temperature in the home
- Brings additional heating oil savings compared to conventional appliances
- More durable
- Easier to service

2 SECONDARY TUBULAR HEAT EXCHANGERS

- 100% welded one-piece heat exchanger, no bolts and fasteners
- 100% premium stainless steel
- **Provided with stainless steel baffles to maximize heat transfer from the heat exchanger**
- The tubular design of the secondary heat exchanger provides a quiet and maximum thermal exchange
- Due to its low restriction to the circulating air, this appliance is compatible with today's **high-efficiency heat pumps or air conditioning systems**

3 HIGH-EFFICIENCY BLOWER

- **Blower supplied with high-efficiency ECM motor**
- Brings additional operating utility savings compared to conventional blower motors
- Innovative blower removal system for easy servicing and maintenance

4 SAFE AND EASY-TO-USE ELECTRONIC CONTROL

- Oversees the safe burner operation and speeds of the fan motor
- Provides on-board connections for optional **electronic air cleaner and humidifier**
- On-board connections for A/C systems
- Continuous low-speed fan switch
- Compatible with heat pumps operating controls

5 HIGH-EFFICIENCY BURNERS

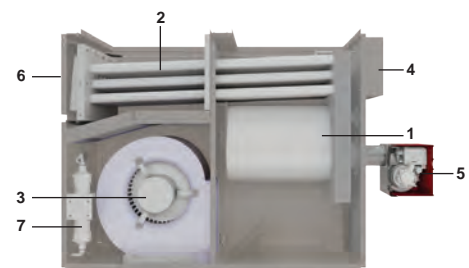
- Offered with high static pressure oil burners that offer a better control of the combustion excess air **allowing for a cleaner and more efficient combustion**
- Electronic safety controls
- High-power electronic ignition

6 VENTING OPTIONS

- **Balanced flue burner with through-the-wall or through-the-roof coaxial or two-pipe venting systems using approved plastic piping**
- Single-pipe approved plastic venting using an existing chimney chase along with a standard burner
- Comes standard with an auto-reset pressure **switch protection device in case of flue or air intake blockage**

7 NO DAMAGE TO THE ENVIRONMENT

- Factory-installed condensate neutralizing cartridge
 - Neutralizes the acid content on the condensate liquid to allow evacuation of the condensate liquid to the house's plumbing
 - Supplied with every furnace
 - Easy to replace



KLC-K SERIES

OPTIMAL EFFICIENCY, UNCOMPROMISED COMFORT



THE KERR FURNACE IS THE FIRST NORTH AMERICAN OIL-FIRED APPLIANCE THAT HOLDS THE ENERGY STAR® CERTIFICATION AT ALL FIRING RATES AND THAT CAN ALSO BE CONVERTED TO NATURAL OR PROPANE GAS. THE KERR WAS ENGINEERED WITH PERFORMANCE IN MIND, WHICH WILL BRING YOU QUALITY AND COMFORT WITH NO COMPROMISE. KERR OFFERS THE DURABILITY AND EASE OF MAINTENANCE THAT YOU ARE LOOKING FOR.

FEATURES

1 ROBUST AND DURABLE COMBUSTION CHAMBER

- 100% premium stainless steel construction
- European design
- Heats up more quickly
- Helps in maintaining a more even temperature in the home
- Brings additional heating savings compared to conventional appliances
- More durable
- Easier to service

2 SECONDARY TUBULAR HEAT EXCHANGERS

- 100% welded one-piece heat exchanger, no bolts and fasteners
- Premium steel
- Provided with stainless steel baffles to maximize heat transfer from the heat exchanger
- The tubular design of the secondary heat exchanger provides a quiet, and maximum thermal exchange
- Due to their low restriction to the circulating air, these appliances are compatible with today's high-efficiency heat pumps or air conditioning systems

3 BLOWER OPTIONS

- Comes standard with standard efficiency PSC blower motors or with high-efficiency ECM blower motors
 - The ECM type motor provides additional operating utility savings compared to conventional motors
- Easy-to-remove system for service and maintenance

4 SAFE AND EASY-TO-USE ELECTRONIC CONTROL

- Oversees the safe burner operation and speeds of the fan motor
- Provides on-board connections for optional electronic air cleaner and humidifier
- On-board connections for A/C systems
- Continuous low-speed fan switch
- Compatible with heat pumps operating controls

5 HIGH-EFFICIENCY BURNERS

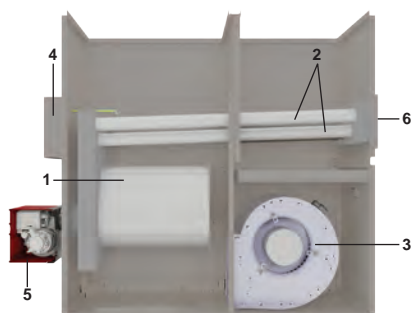
- Offered with high static pressure burners that offer a better control of the combustion excess air allowing for a cleaner and more efficient combustion
- Electronic safety controls
- High-power electronic ignition

6 VENTING OPTIONS

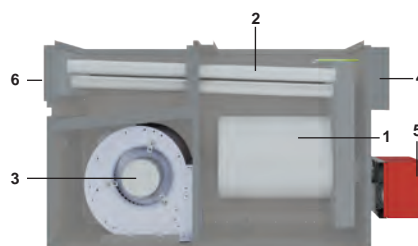
- Rear breech (KLR) or front breech (KLF and KHM)
- Can be vented using a standard chimney and standard burner or using the Granby DVS (Direct Vent System) – through-the-wall venting with a balanced flue burner. This is applicable for the oil-fired appliance only

HIBOY – MULTIPOISE (KHM)

- One unit – 4 installation options
 - Upflow
 - Downflow
 - Horizontal right
 - Horizontal left
- Can be installed anywhere due to its small footprint
- Triple-pass heat exchanger offering the highest heating efficiency for a standard hiboy furnace – the best performing unit of its kind on the market



KLR-K SERIES



KLR-E SERIES



Specifications

Furnace model	Paradigm 2G KLC-K100	Gemini 2G Rear		Gemini 2G Front		Eclipse 2G		Compact 2G KHM-K100	Summit 2G KHM-K200
		KLR-K100	KLR-K200	KLF-K100	KLF-K200	KLR-E100	KLF-E100		
Firing rate USGPH (oil)	0.55 & 0.65	0.55-0.65-0.75	0.9-1.00-1.15	0.55-0.65-0.75	0.9-1.00-1.15	0.55-0.65-0.75	0.55-0.65-0.75	0.55-0.65-0.75	0.85-1.00-1.15
Input capacity MBTU/H (oil)	77 & 91	77 to 105	126 to 161	77 to 105	126 to 161	77 to 105	77 to 105	77 -91-105	119-147-161
Output capacity MBTU/H (oil)	74 & 87	67 to 91	109 to 139	67 to 91	109 to 139	67 to 91	66 to 91	66-79-91	102-126-139
AFUE % (oil)	95.8	86.2 to 87	86.5 to 87.8	86.2 to 87	86.8 to 88	86.2 to 87	86.2 to 87.1	86.0 to 86.8	86.4 to 87.5
ENERGY STAR qualified at every firing rate* (oil, ECM motor only)	Yes	Yes	Yes	Yes	Yes	Yes	Yes	Yes	Yes
Input capacity MBTU/H (gas)	N/A	105	155	105	155	105	105	105	155
Output capacity MBTU/H (gas)	N/A	87	131	87	131	87	87	87	131
AFUE % (gas)	N/A	83.5	83.5	83.5	83.5	83.5	83.5	83.5	83.5
A/C ready electronic operating control	Yes	Yes	Yes	Yes	Yes	Yes	Yes	Yes	Yes
Chimney vent	No	Yes	Yes	Yes	Yes	Yes	Yes	Yes	Yes
Direct vent - Granby DVS (oil)	No	Optional	Optional	Optional	Optional	Optional	Optional	Optional	Optional
Approved plastic through the wall or roof venting options	Yes	No	No	No	No	No	No	No	No
PSC blower motor h.p. - number of speeds	N/A	1/2 hp - 4	3/4 hp - 4	1/2 hp - 4	3/4 hp - 4	1/2 hp - 4	1/2 hp - 4	1/2 hp - 4	3/4 hp - 4
ECM blower motor h.p. - number of speeds	1/2 hp - 5	1/2 hp - 5	3/4 hp - 5	1/2 hp - 5	3/4 hp-5	1/2 hp - 5	1/2 hp - 5	1/2 hp - 5	3/4 hp - 5
CFM at 0.50" wc (ext. static pressure PSC Motor)	N/A	1300	1910	1300	1910	1300	1300	1275	2030
CFM at 0.50" wc (ext. static pressure ECM)	1230	1300	1910	1300	1910	1300	1300	1230	1910
Dimensions (in.)									
Height	36 ⁷ / ₈	44 ¹ / ₂	44 ¹ / ₂	44 ¹ / ₂	44 ¹ / ₂	29 ³ / ₈	29 ³ / ₈	46 ¹ / ₄	49 ⁷ / ₈
Width	21 ¹ / ₂	21 ¹ / ₂	21 ¹ / ₂	21 ¹ / ₂	21 ¹ / ₂	21 ¹ / ₂	21 ¹ / ₂	21 ⁷ / ₁₆	21 ⁷ / ₁₆
Depth	50 ¹ / ₄	50 ¹ / ₂	50 ¹ / ₂	53 ¹ / ₂	53 ¹ / ₂	50 ¹ / ₂	53 ¹ / ₂	26	30
Supply plenum size	20 x 20	23 ⁷ / ₈ x 20	23 ⁷ / ₈ x 20	23 ⁷ / ₈ x 20	23 ⁷ / ₈ x 20	20 x 20	18 x 21 ³ / ₄	20 x 20	24 x 20
Return plenum size	20 x 20	19 x 20	19 x 20	19 x 20	19 x 20	20 x 20	18 x 20 ³ / ₄	18 x 18	23 x 18

About Kerr

Kerr is a leading wholesale distributor of heating, ventilation, air conditioning and refrigeration (HVACR) materials for residential and commercial markets. Kerr offers technology that enhances home comfort, saves energy and protects the environment. In business since 1949, Kerr's business has grown over the years from a humble beginning with the founder (and current chairman David Kerr Wilson) selling and servicing out of a milk truck. Since the beginning, Kerr has changed its product offering to reflect the best HVACR options on the market for our customers and to stay ahead of industry trends. Kerr offers a wide range of home comfort solutions including complete central heating systems (boilers and furnaces) and all parts, geothermal systems, solar systems, refrigeration, air quality, etc. We also offer training, advice and expertise on the products we carry. Essentially, Kerr is a contractor's one-stop shop for all HVACR jobs - both residential and commercial.



Manufactured by
Granby Furnaces Inc.
12118 Hwy 209, P.O.Box 637
Parrsboro, NS B0M 1S0 Canada

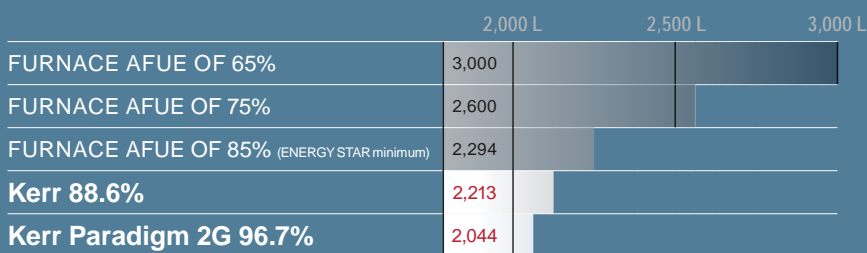
@ info@kerrsmartenergy.com
W www.kerrsmartenergy.com





GET THE MAXIMUM OUT OF YOUR HEATING APPLIANCE

COMPARATIVE ANNUAL HEATING OIL CONSUMPTION CHART



Example of a yearly heating oil consumption (liters)

* Annual Fuel Utilization Efficiency

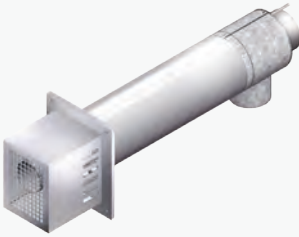
ECM HIGH-EFFICIENCY MOTORS VERSUS PSC MOTORS UP TO 82% ELECTRIC ENERGY EFFICIENCY WITH THE ECM[†] TECHNOLOGY!

Represents savings of up to 50% (watts) during heating and cooling mode and of up to 75% (watts) during continuous fan operation.

[†]Electronically commutated motor

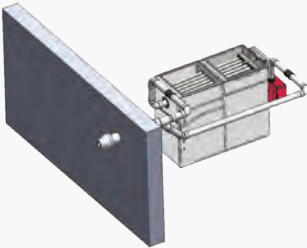
VENTING OPTIONS (OIL-FIRED ONLY)

(KLF, KLR, KHM) DIRECT VENT SYSTEM (DVS)



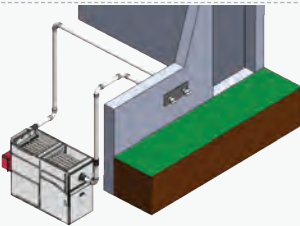
- Replaces conventional chimneys
 - 100% stainless steel coaxial terminal
 - Sealed combustion using balanced **flue burners (oil-fired appliance only)**
 - Comes standard with an auto-reset pressure **switch protection device in case of flue** or air intake blockage
 - Brings outside combustion air, ideal for air-tight homes
 - **Stainless steel flue pipe** available in 10, 15 or 20-foot length
-

(KLC) COAXIAL PLASTIC VENTING THROUGH THE WALL OR THROUGH THE ROOF



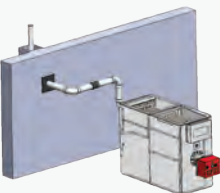
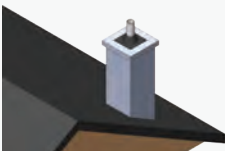
- Ideal for installation where there is no chimney
 - Sealed combustion using balanced **flue burner**
 - Simple installation
-

TWO-PIPE PLASTIC VENTING THROUGH THE WALL



- Ideal for installation where there is no chimney
 - Sealed combustion using balanced **flue burner**
 - Can run greater distances than plastic coaxial venting
 - Simple installation
-

SINGLE-PIPE PLASTIC VENTING THROUGH AN EXISTING CHIMNEY CHASE



- Single-pipe venting using an existing chimney chase
- The most economical and simple venting option
- Single-pipe installation using a standard burner
- Can run long horizontal distances
- Ideal when through-the-wall venting options are not possible